

Eskimo®
ICE FISHING GEAR

2017-18
PRODUCT GUIDE



NEW

OPTIMIZED PROPANE AUGER
P1 ROCKET



NEW PRODUCTS

ROCKET
★ AUGER ★

PAGE
7



PAGE
8



GRIZZLY

PAGE
11



SIERRA

PAGE
12



LOCKOUT
ICE SUIT



ICE FISH GEAR

Eskimo

PROPRANE

Eskimo



Researching and buying products has never been easier with the vast array of information we now have at our fingertips. Social media, product reviews, YouTube videos and much more are all just a click away. As an Ice fishing products design and manufacturing company in northwest Wisconsin, we've realized that these online reviews and feedback can greatly benefit a company like ours as long as we really listen. We've been true to our roots for over **50 YEARS WITH A SIMPLE PHILOSOPHY:** *innovate and produce great products that you can stand behind.*

Companies that cut corners, ignore their customers and fail to use their own products are not long for this world. At Eskimo, we are just like you; **REAL HARD WORKING PEOPLE** that get up every day to solve problems and advance our business. We appreciate a job well-done, applaud innovative designs, care for the world around us and value what a dollar stands for. At the same time, we don't take ourselves too seriously, and we value the social nature of our sport over the long-dark, cold months.

At Eskimo, we want to earn your business, and we want to have generations of repeat customers. Whether you are an avid fishing guide or a beginner, **WE ARE IN THIS TOGETHER**, and we should all help build and promote the sport we love so dearly.



“

These augers set an entirely new standard for high-performance ice augers.”

MIKE OLSON
FISH ADDICTIONS TV



RUNS FAST

THE 2-CYCLE AND 4-CYCLE ENGINES ON THE NEW F1 & P1 ROCKET AUGERS ARE TUNED FOR HIGH-PERFORMANCE AND DELIVER OPTIMAL POWER.



SPINS FAST

NEWLY STREAMLINED FOR HIGHER SPEED AND LESS WEIGHT, OUR ALL-METAL TRANSMISSION CONVERTS POWER TO PERFORMANCE ON THE ICE.



CUTS FAST

AVAILABLE ON ESKIMO ROCKET AUGERS IS OUR NEW PRECISION CAST BOTTOM THAT SHREDS THROUGH ICE FASTER AND SMOOTHER THAN EVER BEFORE.

NEW FOR 2017-18



BREAK THE ICE WITH ROCKET SPEED

The new Rocket auger series from Eskimo is a game changer for powered ice augers. The cutting surface is equipped with a cast aluminum bottom and fitted with dual blades and a centering point—giving you a smooth, controlled cut every time. Paired with our F1 or P1 powerhead and high-speed transmission, you'll be amazed at the cutting power and speed of these augers.

NEW FOR 2017-18



“BUILD A BETTER TUB...”

...that was the goal set forth on day one of designing the best flip-over shack. We've gone back to the drawing board and created the best roto-molded ice fishing sled on the market. Ice fishermen demand more from their gear and we knew the formula. Build. Test. Repeat. The all-new Grizzly flip shelter and sled are engineered and tested in the toughest conditions Old Man Winter can dish out.

ROTO-MOLDED SLED

BUILT TO WITHSTAND BUMPS, SCRAPES AND DROPS WITHOUT BREAKING OR WEARING OUT. THIS SLED IS TOUGH.



STORMSHIELD™ FABRIC

900D, FOUR-LAYER INSULATED FABRIC TRAPS IN HEAT, KEEPS OUT THE ELEMENTS AND MINIMIZES CONDENSATION



EASY-ACCESS SLED

A NEWLY DESIGNED SEATING SYSTEM SLIDES ALONG THE SLED EDGE AND RAISES FOR EASY ACCESS TO YOUR SLED AND CUSTOMIZABLE SEATING OPTIONS





“

This sled is rock-solid and ready for the toughest conditions. The Grizzly is a beast.”

TROY PETERSON
MR. BLUEGILL GUIDE SERVICE



“

Eskimo's Sierra flip
shacks are lightweight
and reliable. Perfect for
fishing with a friend.”

KYLE AGRE
BREWER-AGRE OUTDOORS



SQUARE POLES

UPDATED, SQUARE ALUMI-
NUM POLES ADD STRUC-
TURAL STRENGTH AND
SNAP INTO PLACE MORE
EASILY THAN TRADITION-
AL ROUND POLES.



FLIP-OVER SEATING

WE'VE ATTACHED OUR
CLASSIC VERSA SEATS TO
A NEW MOUNTING SYSTEM
THAT ALLOWS FOR MORE
STORAGE ROOM AND
EASIER ACCESS TO GEAR
IN THE SLED.



SPACIOUS 2-MAN SHELTERS

OUR SIERRA FLIP SHELTERS
PROVIDE PLENTY OF ROOM
AND FISHABLE AREA FOR
TWO ANGLERS TO FISH
COMFORTABLY.

NEW FOR 2017-18



BRING A BUDDY

The all-new Eskimo Sierra and Sierra Thermal 2-man flip shelters are top choices for chasing fish with a friend. The Sierra is covered in Eskimo's high thread-count IceTight fabric, while the Sierra Thermal features IQ insulated fabric to trap in the heat on cold days. Roomy, lightweight, and dependable, they can be towed to your favorite spot with the included pull-rope or optional vehicle tow bar accessory.

NEW FOR 2017-18

LOCKOUT™

I C E S U I T

LOCKOUT THE COLD. LOCKOUT THE ELEMENTS.

Introducing the new Lockout™ ice jacket and bibs, we are excited to launch our first-ever ice suit. Built with anglers in mind, we've incorporated all of the crucial components needed to keep warm and dry on the ice. A rugged, 600D polyester outer shell keeps the elements out, while the soft 210T internal lining and 60g Thermadex insulation keeps our customers warm. Sureflote® technology provides added buoyancy, and sharp styling and easy-access zippers complete the suit.

LOCKOUT™ JACKET

A 600 DENIER ENDURA
OUTER SHELL WITH WA-
TERPROOF / BREATHABLE
HYDRAPORE® 5000
AND A SUREFLOTE® FLO-
TATION-ASSIST LINER



LOCKOUT™ BIBS

FAST DRAINING HEMS,
210T INTERIOR LINING,
60G THERMADEX® INSU-
LATION AND ADJUSTABLE
INSEAM AND CUFFS





I can't wait to hit the ice in this new suit. It has all the features I need and looks sharp!"

SCOTTY BREWER
BREWER-AGRE OUTDOORS



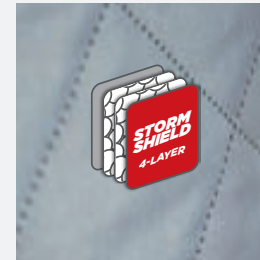


AUTHENTICITY.

High-quality ice fishing gear designed, developed and tested by real, avid fishermen.



ICE SHELTERS



STORMSHIELD™ INSULATED FABRIC

THE NEW GRIZZLY™ SHELTER FEATURES 900D, 4-LAYER STORMSHIELD FABRIC THAT KEEPS IN THE WARMTH WHILE REDUCING CONDENSATION.



MESH STORAGE POCKETS

EACH ESKIMO FLIP SHELTER FEATURES A COMPLEMENT OF DURABLE MESH STORAGE POCKETS THAT ARE THE PERFECT PLACE FOR YOUR GLOVES, BAIT, OR OTHER GEAR.

FLIP SHELTERS

If you're an ice angler who likes to test out multiple spots on the ice, Eskimo offers a variety of flip-style shelters for you. Designed for easy setups and takedowns, flip shelters incorporate everything into a sled base so you can quickly move to where the fish are biting. Eskimo flip shelters are simple to flip up and can be used as a windbreak on sunny days. Additional features include IceTight fabric, YKK zippers, and large mesh storage pockets.



QUICKFLIP 1
15300

CAPACITY	FABRIC
1 PERSON	IceTight™
FISHABLE AREA	
9.3 ft²	
WEIGHT	HEIGHT
52 lbs	60.5"



WIDE 1 INFERNO
15350

CAPACITY	FABRIC
1 PERSON	IQ INSULATED
FISHABLE AREA	
14.8 ft²	
WEIGHT	HEIGHT
62 lbs	60.5"

NEW FOR 2017-18



SIERRA
25300

CAPACITY	FABRIC
2 PEOPLE	IceTight™
FISHABLE AREA	
22.5 ft²	
WEIGHT	HEIGHT
74 lbs	67"

NEW FOR 2017-18



SIERRA THERMAL
25250

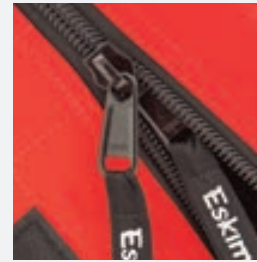
CAPACITY	FABRIC
2 PEOPLE	IQ INSULATED
FISHABLE AREA	
22.5 ft²	
WEIGHT	HEIGHT
82 lbs	67"

NEW FOR 2017-18



GRIZZLY
26500

CAPACITY	FABRIC
2-3 PEOPLE	STORMSHIELD INSULATED
FISHABLE AREA	
28 ft²	
WEIGHT	HEIGHT
128 lbs	78"



YKK® ZIPPERS

ALL ESKIMO SHELTERS, INCLUDING EVO CROSSOVERS, FEATURE INDUSTRY-LEADING YKK® BRAND ZIPPERS STANDARD.



TOWABLE SLED

EVO CROSSOVER SHELTERS ARE EASILY TOWABLE, WITH THE SPACIOUS POP-OUT PANELS FOLDING DOWN AND PACKING INTO A SLED SIMILAR TO A FLIP-STYLE.

CROSSOVER SHELTERS

Crossover shelters offer the convenience of a flip-style shelter, with the room and comfort of a pop-up. Compared to similar sized flip-style shelters, the crossover offers more fishable area and functional space, providing plenty of maneuverability and room for your ice fishing gear. The aerodynamic shape of the crossover shelters cuts through the wind, allowing cold air to pass around the shelter and helping the venting system heat the shelter efficiently. With more fishable area, lightweight features, better materials and extra height, the Crossover shelter is truly a breakthrough for the ice fishing industry.



EVO1
22100

CAPACITY	FABRIC
1 PERSON	IceTight™
FISHABLE AREA	
19.5 ft²	
WEIGHT	HEIGHT
52 lbs	65"



EVO2
22200

CAPACITY	FABRIC
2 PEOPLE	IceTight™
FISHABLE AREA	
34.25 ft²	
WEIGHT	HEIGHT
85 lbs	75"



EVO1iT
25501

INSULATED TOP	CAPACITY	FABRIC
	1 PERSON	IQ INSULATED
	FISHABLE AREA	
	19.5 ft²	
	WEIGHT	HEIGHT
57 lbs	65"	



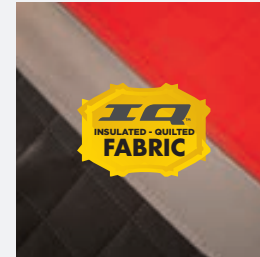
EVO2iT
25502

INSULATED TOP	CAPACITY	FABRIC
	2 PEOPLE	IQ INSULATED
	FISHABLE AREA	
	34.25 ft²	
	WEIGHT	HEIGHT
95 lbs	75"	



PORTABLE CARRY BAGS

THE FATFISH AND QUICK-
FISH POP-UP SHELTERS
FOLD UP EASILY AND
PACK INTO A PORTABLE
CARRYING BAG.



IQ™ INSULATED FABRIC

600D INSULATED FABRIC
TRAPS IN HEAT AND KEEPS
OUT THE ELEMENTS WITH
A HIGHER THREAD COUNT
THAN COMPETITORS.

FATFISH

Fish more comfortably with more people and more ice gear in the FatFish™ - the world's first wide-bottom, pop-up, portable ice fishing shelter. The FatFish is designed to give you up to 80% more fishable area while offering the same easy set-up and portability as the best-selling line of Quickfish™. The entire line of FatFish ice fishing shelters are equipped with an all-metal ball and socket design and larger diameter poles, resulting in a stronger and more durable shelter.



FATFISH 949
FF949

CAPACITY	FABRIC
3-4 PEOPLE	IceTight™
FISHABLE AREA	
61 ft²	
WEIGHT	HEIGHT
30 lbs	80"



FATFISH 949i
FF949i

CAPACITY	FABRIC
3-4 PEOPLE	IQ INSULATED
INSULATED	FISHABLE AREA
	61 ft²
WEIGHT	HEIGHT
44 lbs	80"



FATFISH 9416
FF9416

CAPACITY	FABRIC
7-9 PEOPLE	IceTight™
FISHABLE AREA	
109 ft²	
WEIGHT	HEIGHT
46 lbs	80"



FATFISH 9416i
FF9416i

CAPACITY	FABRIC
7-9 PEOPLE	IQ INSULATED
INSULATED	FISHABLE AREA
	109 ft²
WEIGHT	HEIGHT
66 lbs	80"



FATFISH 6120i
FF6120i

CAPACITY	FABRIC
5-7 PEOPLE	IQ INSULATED
INSULATED	FISHABLE AREA
	80 ft²
WEIGHT	HEIGHT
55 lbs	76"



ICE ANCHORS

ESKIMO ICE ANCHORS ARE REVERED FOR THEIR EASE OF USE AND TIGHT-HOLDING GRIP. DURABLE, SELF-TAPPING AND SHARP, THEY EASILY SCREW INTO THE ICE BY HAND



ICETIGHT™ FABRIC

300D ICETIGHT FABRIC FEATURES A HIGHER THREAD COUNT THAN COMPETITORS AND PROVIDES A FORMIDABLE BARRIER IN THE ELEMENTS.

QUICKFISH

As the innovator of the first pop-up portable ice fishing shelter, Eskimo® knows a thing or two about building the world's best on-the-go portables. Don't be fooled by imitation shelters with flimsy hubs, weak poles and cheap fabric. The QuickFish™ Series is the original and still the best. Constructed with sturdy hubs, strong poles, ample storage pockets, reinforced bottoms, YKK® zippers, self-tapping ice anchors and removable windows, the QuickFish is built to last season after season.



QUICKFISH 2

69151

CAPACITY	FABRIC
2 PEOPLE	IceTight™
FISHABLE AREA	
25 ft²	
WEIGHT	HEIGHT
21.5 lbs	67"

QUICKFISH 3

69143

CAPACITY	FABRIC
3 PEOPLE	IceTight™
FISHABLE AREA	
34 ft²	
WEIGHT	HEIGHT
26 lbs	80"

QUICKFISH 3i

69445

CAPACITY	FABRIC
3 PEOPLE	IQ INSULATED
FISHABLE AREA	
34 ft²	
WEIGHT	HEIGHT
34 lbs	80"

QUICKFISH 5i

24105

CAPACITY	FABRIC
4 PEOPLE	IQ INSULATED
FISHABLE AREA	
64 ft²	
WEIGHT	HEIGHT
45 lbs	84"

QUICKFISH 6

69149

CAPACITY	FABRIC
6 PEOPLE	IceTight™
FISHABLE AREA	
68 ft²	
WEIGHT	HEIGHT
40 lbs	80"

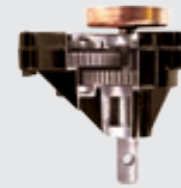


CRAFTSMANSHIP.

Passion, dedication and relentless testing go into each Eskimo ice fishing product.



ICE AUGERS



ALL-METAL TRANSMISSION

FEATURING SEALED BALL BEARINGS INSTEAD OF BUSHINGS, ALL ESKIMO POWER AUGERS FEATURE A RUGGED, ALL-METAL TRANSMISSION.



5-YEAR WARRANTY

ALL ESKIMO POWER AUGERS ARE BACKED BY AN INDUSTRY-LEADING FIVE YEAR WARRANTY.

GAS AUGERS

Eskimo has been building high-performance ice augers since 1960. Our experience and dedication allows us to continue pushing the envelope while leading the industry in quality and performance. Whatever your needs are, we have the perfect gas auger for you, and all of our power augers are backed by an industry-leading 5-year warranty.



NEW FOR 2017-18



STINGRAY
QUANTUM AUGER

8"

MODEL
S33Q8
ENGINE
33cc
WEIGHT
28 lbs



F1
ROCKET AUGER

8"

MODEL
F1R08
ENGINE
33cc
WEIGHT
22 lbs

10"

MODEL
F1R10
ENGINE
33cc
WEIGHT
24 lbs



MAKO
QUANTUM AUGER

8"

MODEL
M43Q8
ENGINE
43cc
WEIGHT
32 lbs

10"

MODEL
M43Q10
ENGINE
43cc
WEIGHT
34 lbs



SHARK
QUANTUM AUGER

10"

MODEL
Z71Q10
ENGINE
71cc
WEIGHT
34 lbs



OPTIMIZED FOR PROPANE

ESKIMO PROPANE ENGINES HAVE BEEN SPECIFICALLY DESIGNED FOR PROPANE FUEL, DELIVERING MAXIMUM PERFORMANCE AND EFFICIENCY.



5-YEAR WARRANTY

ALL ESKIMO POWER AUGERS ARE BACKED BY AN INDUSTRY-LEADING FIVE YEAR WARRANTY.

PROPANE AUGERS

Many ice anglers are switching to 4-cycle, propane-powered augers due to the clean burning, low-maintenance, and mess-free nature of the auger. The HC40 was the first auger designed to optimize high-compression propane and is a tried and true fan favorite. Our new P1 Rocket auger ramps up speed and performance while reducing weight at the same time.

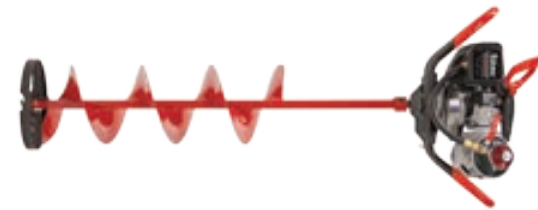


NEW FOR 2017-18



HC40
QUANTUM AUGER

8"	10"
MODEL	MODEL
HC40Q8	HC40Q10
ENGINE	ENGINE
40cc	40cc
WEIGHT	WEIGHT
32 lbs	34 lbs



P1
ROCKET AUGER

8"	10"
MODEL	MODEL
P1R08	P1R10
ENGINE	ENGINE
40cc	40cc
WEIGHT	WEIGHT
26 lbs	28 lbs



INDUSTRY-LEADING
5-YEAR
WARRANTY
ON POWER AUGERS

BUILT TO LAST.

The world's best-selling power ice augers,
backed by an industry-leading 5-Year Warranty.



NATIONAL PRO STAFF



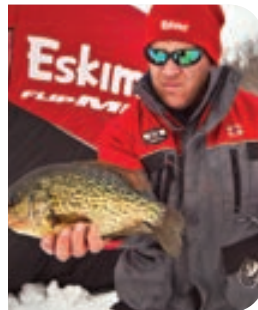
KYLE AGRE



SCOTTY BREWER



MIKE OLSON



TROY PETERSON

BREWER-AGRE OUTDOORS

Kyle Agre and Scotty Brewer teamed up to form Brewer-Agre Outdoors. While other industry professionals focus on being the techiest, most hardcore ice anglers, Kyle and Scotty take a refreshing, down-to-earth approach to sharing their knowledge. They focus on educating others about all things ice fishing. Each week, Brewer-Agre Outdoors hosts a fishing-themed radio show that broadcasts in the Fargo/Moorhead area of North Dakota. Scotty is President of FM Walleyes United, and Kyle is Vice-President. Kyle and Scotty also represent our brands at public events, seminars and shows. The duo also hosts ShackTalk, the Eskimo-sponsored ice fishing podcast that provides ice fishermen with on-demand education and entertainment.

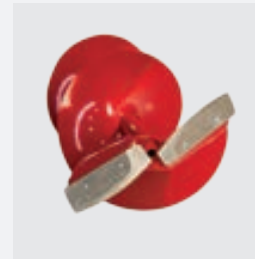
FISH ADDICTIONS

Founded by Eskimo National Pro Staff member, Mike Olson, Fish Addictions is an integral part of the Eskimo team. Beginning as a forum and web-based TV show, Fish Addictions now airs weekly on Fox Sports Wisconsin and Fox Sports North, presented by Eskimo.

Mike and his team have been crucial in field testing our products, giving product feedback, and helping to identify areas for improvement for the true hardcore angler. Fish Addictions supports Eskimo at trade shows, seminars, in-store events, and more.

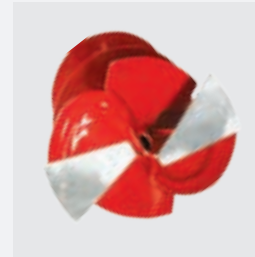
MR. BLUEGILL GUIDE SERVICE

Troy Peterson owns and operates Mr. Bluegill Guide Service and guides ice anglers throughout Northeast and Central Wisconsin. When not guiding, he hosts seminars and instructional clinics. Troy also represents and assists Eskimo at ice fishing shows and other events.



DUAL-FLAT BLADES

HD AUGER MODELS FEATURE DURABLE, STAINLESS STEEL FLAT BLADES THAT ARE MADE TO STAY SHARP LONGER.



CURVED BLADES

THE SILVERTIP AUGER FEATURES SMOOTH-CUTTING, CURVED BLADES THAT MAKE STARTING AND FINISHING YOUR HOLE A BREEZE.

HAND AUGERS

Get through the ice quickly with two sharp blades and a little elbow grease. Eskimo hand augers are great for early and late ice, but are also fully-capable of drilling through deep ice with less effort than other hand augers on the market. They feature comfortable hand grips and an easy to use cross-bolt takedown system. Silvertip adds CNC curved blades for even faster cutting.



SILVERTIP™

6"	8"
BLADES	BLADES
Curved	Curved
LENGTH	LENGTH
49"-58" ADJUSTABLE	49"-58" ADJUSTABLE
WEIGHT	WEIGHT
7 lbs	8 lbs



ESKIMO HD

6"	7"	8"
BLADES	BLADES	BLADES
Dual-Flat	Dual-Flat	Dual-Flat
LENGTH	LENGTH	LENGTH
49"-58" ADJUSTABLE	49"-58" ADJUSTABLE	49"-58" ADJUSTABLE
WEIGHT	WEIGHT	WEIGHT
6.5 lbs	7 lbs	7.5 lbs



OUTDOOR

Skimo
ICE FISHING SINCE 1978

SALE



PASSION.

We make better products because we love what we do and the community that we're a part of.



MORE ICE FISHERMAN CHOOSE ESKIMO THAN ANY OTHER BRAND

APPAREL

Stay warm and comfortable both on and off the ice with our hoodies, hats and all-new Lockout ice suit.



HOCKEY HOODIE

S	19060
M	19061
L	19062
XL	19063
2XL	19064

BUFFALO PLAID HOODIE

M	24392
L	24393
XL	24394
2XL	24395
3XL	24396
4XL	24397



BUFFALO PLAID ALASKAN FUR

M	27761
L	27762
XL	27763



BUFFALO PLAID HAT

OSFA 23051



STRIPED WINTER HAT

OSFA 23050



NEW FOR 2017-18

NEW FOR 2017-18



LOCKOUT™ JACKET
ESKIMO ICE SUIT

S	27614	2XL	27618
M	27615	3XL	27619
L	27616	4XL	27620
XL	27617	5XL	27621



LOCKOUT™ BIBS
ESKIMO ICE SUIT

S	27622	2XL	27626
M	27623	3XL	27627
L	27624	4XL	27628
XL	27625	5XL	27629

- 600D ENDURA OUTER SHELL**
- HYDRAPORE® 5000 W/B**
- 100% PU SEAM TAPED**
- SUREFLOTE® FLOTATION-ASSIST**
- 210T INTERIOR LINING**
- 60G THERMADEX® INSULATION**

- 360 Degree Reflective Material
- YKK® Heavy Duty Front Zipper
- Cargo Pockets
- Exterior D-Rings for Accessories
- Removable Hood w/Memory Wire Visor
- Velcro Adjustable Cuff Closures
- Inner Cell Phone Pocket
- Zippered Breast Pockets
- Soft Touch Side Hand Pockets
- Fast-Drain Hems

- 600D ENDURA OUTER SHELL**
- HYDRAPORE® 5000 W/B**
- 100% PU SEAM TAPED**
- SUREFLOTE® FLOTATION-ASSIST**
- 210T INTERIOR LINING**
- 60G THERMADEX® INSULATION**

- 360 Degree Reflective Material
- YKK® Heavy Duty Front Zipper
- Cargo Pockets
- Exterior D-Rings for Accessories
- Adjustable Inseam
- Side Stretch Panels for Flexibility
- Super-Strong Crotch Panel
- Fast-Drain Hems

A close-up photograph of a person's hands using a red plastic tool to adjust a white cable on a piece of machinery. The person is wearing a red and black patterned hoodie. The background is a plain, light blue-grey color.

INNOVATION.

We are fueled by a drive for constant improvement.



A C C E S S O R I E S



REDNECK
CHISELS™

CHISELS

Long-lasting. Durable. Comfortable. When it comes to Redneck Chisels, these words say it best. Our heavy-duty line of chisels has everything you need to effectively chip through the ice. A rock-solid tool, perfect for cutting out or re-opening a hole early or late in the season. They're a must-have addition to your ice fishing gear.



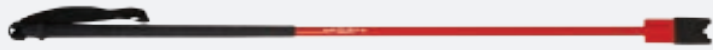
ECONOMY
CH7

LENGTH	ACTION
52.5"	Single
WEIGHT	HANDLE
4.5 lbs	Bare



BUCKET
CH9

LENGTH	ACTION
19"	Dual
WEIGHT	HANDLE
4 lbs	Bare



ONE-PIECE
CH11

LENGTH	ACTION
59.5"	Triple
WEIGHT	HANDLE
11 lbs	Foam



TWO-PIECE
CH12

LENGTH	ACTION
64"	Triple
WEIGHT	HANDLE
11 lbs	Foam

SLED SHELTER TRAVEL COVERS

#16475 / #27651 / #23400 / #27630

Keep snow and slush out and your gear in while pulling your Eskimo sled. Elastic sides hold tight to the lip of the tub, and the covers strap down for extra security.

SLED NOT INCLUDED



50" TRAVEL COVER

16475

FITS THESE SHELTERS

15300 • 15350 • 22100 • 25501



60" SIERRA TRAVEL COVER

27651

FITS THESE SHELTERS

11427 • 15400 • 69167 • 69164
69161 • 25250 • 25300



60" TRAVEL COVER XL

23400

FITS THESE SHELTERS

22200 • 25502



70" DELUXE TRAVEL COVER

27630

FITS THESE SHELTERS

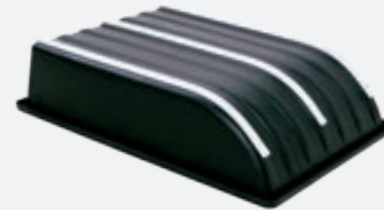
26500

SLED SHELTER RUNNER KITS

#16465 / #69195 / #26899

Our high speed tracking kits are made from ultra-high molecular weight polyethylene, which help you pull our sleds more easily and extend the life of the sled. All mounting hardware included.

SLED NOT INCLUDED



50" TRACKING KIT

16465

FITS THESE SHELTERS

15300 • 15350 • 22100 • 25501

60" TRACKING KIT

69195

FITS THESE SHELTERS

11427 • 15400 • 69167 • 69164 • 69161
22200 • 25502 • 25250 • 25300



70" TRACKING KIT

26899

FITS THESE SHELTERS

26500

NEW FOR 2017-18



XL FOLDING ICE CHAIR

27613

We took our folding ice chair and made it bigger and more comfortable. The larger seat provides more support and added relief during long periods of sitting. We also added a side pocket for quick access to important items.



FOLDING ICE CHAIR

69813

Compact and versatile folding ice chair. The triangular seat design makes bending down and standing up faster and easier. This is a must have for the on-the-go ice fisherman. Convenient carrying bag included.

ICE ANCHOR DRILL ADAPTER

#18734

Universal ice anchor drill adapter for use with a power drill. Quickly and easily drill your ice anchors into the ice to keep your shelter in place.



UNIVERSAL SLED HITCH

#11608

Provides better mobility with a triple pivoting action that helps maneuver across uneven terrain. Mounts on the sides of the sled and is compatible with sleds with widths of 19", 21.5", 26.5", 28", and 32". All mounting hardware included.



DELUXE SHELTER TIE DOWN KIT

24260

The Eskimo Deluxe Shelter Tie Down Kit contains (2) six-foot, strong, durable tie-down straps to easily secure your fishing shelter in the elements. (2) self-tapping ice anchors are also included.



ICE ANCHORS 2-PACK

69138

The best ice anchors on the market. Includes (2) sharp, self-tapping anchors with oversized grips. Easy to use and won't bend or pull out under pressure.



AUGER QUICK RELEASE SYSTEM #16327

The Eskimo Auger Quick Release allows you to quickly remove or attach your Eskimo Ice Auger Powerhead to your Eskimo Auger bit. This is a great way to switch between auger bit sizes or remove the auger for easy transport.

POWERHEAD AND ICE AUGER NOT INCLUDED.
ASSEMBLY MAY BE REQUIRED



HYPERCOIL #12777

Fits Eskimo 2-Cycle Ice Augers and reduces pulling effort by 62%. Features Mitten Grip Handle.

INDUSTRY FIRST

REPLACEMENT STUB SHAFT #22045

Replacement stub shaft that connects the Quick Release System ([16327](#)) to an auger bit.



REPLACEMENT POWER BLADES #28340 / #28345

Replacement blades for all Eskimo powered ice augers.



28340

8 Inch Power Blades

28345

10 Inch Power Blades



CENTERING POINT #90129

Replacement centering point for all Eskimo Augers. Helps keep auger in place when beginning to drill.



AUGER BLADE PROTECTOR #232A / #233A

Blade protector for Eskimo quantum augers with attaching bungee snap. [#232A](#) is compatible with all 8-inch Eskimo power augers. [#233A](#) is compatible with all 9-inch and 10-inch Eskimo power augers.



AUGER EXTENSION

#EXT12 / #EXT18

12" or 18" auger extensions for all Eskimo power ice augers. Ideal for conditions with ice thicker than 42".



SELF-VENTING GAS CAP

#15346

Viper Engine self-venting gas cap.

POWER AUGER BAG

#69812

Durable carrying/storage bag for all Eskimo power ice augers. The bag features a reinforced plastic interior to protect auger bit and blades. Includes convenient side pocket for oil or tools.



POWERHEAD COVER

#69811

Covers all Eskimo power auger powerheads. Keeps the engine warm and protected when not in use.



QUANTUM AUGER

#QT8N / #QT10N

Replacement augers for powered ice auger powerheads.

QT8N

8 Inch Auger

QT10N

10 Inch Auger



300400



20427

ESKIMO ENGINE OIL

#300400 / #20427

Engine oil specially packaged for Eskimo gas and propane engines.

300400 2-Cycle 50:1 Viper® Oil

20427 4-Cycle 0W40 Engine Oil

**CROSSOVER
SHELTERS**

	EVO 1	EVO 2	EVO 11T	EVO 21T
MODEL #	22100	22200	25501	25502
CAPACITY	1 Person	2 People	1 Person	2 People
FISHABLE AREA	19.5 ft ²	34.25 ft ²	19.5 ft ²	34.25 ft ²
SET-UP SIZE	66" x 92"	105" x 105"	66" x 92"	105" x 105"
SLED SIZE	50" x 32" x 10"	60" x 37" x 10"	50" x 32" x 10"	60" x 37" x 10"
INSULATION	—	—	Roof Panel	Roof Panel
FABRIC	IceTight™	IceTight™	IceTight™ / IQ™	IceTight™ / IQ™
HEIGHT	65"	75"	65"	75"
WEIGHT	52 lbs	85 lbs	57 lbs	95 lbs
COLLAPSED SIZE	50" x 33.5" x 20.5"	60" x 37.5" x 22.5"	50" x 33.5" x 20.5"	60" x 37.5" x 22.5"
TRANSPORT	Towable	Towable	Towable	Towable
FRAMEWORK	Steel / Aluminum / Fiberglass	Steel / Aluminum / Fiberglass	Steel / Aluminum / Fiberglass	Steel / Aluminum / Fiberglass
ICE ANCHOR QTY	6	6	6	6
VENTILATION	1	1	1	1
WINDOWS	5	7	5	7
DOORS	1	2	1	2
SEATING	(1) Swivel Versa™	(2) Swivel Versa™	(1) Swivel Versa™	(2) Swivel Versa™
SEAT HEIGHT	18"	19"	18"	19"
GEAR POCKETS	2	2	2	2
WARRANTY	1-Year Limited	1-Year Limited	1-Year Limited	1-Year Limited

**FLIP
SHELTERS**

	QUICKFLIP 1	WIDE 1 INFERNO	SIERRA	SIERRA THERMAL	GRIZZLY
MODEL #	15300	15350	25300	25250	26500
CAPACITY	1 Person	1 Person	2 People	2 People	2-3 People
FISHABLE AREA	9.3 ft ²	14.8 ft ²	22.5 ft ²	22.5 ft ²	28 ft ²
SET-UP SIZE	32" x 96"	52" x 97"	60" x 84"	60" x 84"	70" x 94" x 78"
SLED SIZE	50" x 32" x 10"	50" x 32" x 10"	60" x 31.5" x 7"	60" x 31.5" x 7"	70" x 36" x 13.5"
INSULATION	—	Full	—	Full	Full
FABRIC	IceTight™	Insulated IQ™	IceTight™	Insulated IQ™	StormShield™
HEIGHT	60.5"	60.5"	67"	67"	78"
WEIGHT	52 lbs	62 lbs	74 lbs	82 lbs	128 lbs
COLLAPSED SIZE	50" x 32" x 17"	50" x 32" x 17"	60" x 36" x 19.5"	60" x 36" x 19.5"	70" x 38" x 22"
TRANSPORT	Towable	Towable	Towable	Towable	Towable
FRAMEWORK	Steel / Aluminum	Steel / Aluminum	Steel / Aluminum	Steel / Aluminum	Steel / Aluminum
ICE ANCHOR QTY	—	—	—	—	—
VENTILATION	2	2	1	1	1
WINDOWS	3	4	4	4	4
DOORS	1	1	1	1	1
SEATING	Folding Ice Chair	(1) Swivel Versa™	(2) Fixed Versa™	(2) Swivel Versa™	(2) Swivel Versa™
SEAT HEIGHT	16.5"	18"	16.5"	18"	18.5"
MESH POCKETS	2	2	2	2	2
WARRANTY	1-Year Limited	1-Year Limited	1-Year Limited	1-Year Limited	1-Year Limited

CHISELS

	ECONOMY	BUCKET	ONE-PIECE	TWO-PIECE
MODEL #	CH7	CH9	CH11	CH12
LENGTH	52.5"	19"	59.5"	64"
HEAD DESIGN	Single Action	Dual Action	Triple Action	Triple Action
FOAM GRIP	No	No	Yes	Yes
TETHER	No	Yes	Yes	Yes
WEIGHT	4.5 lbs	4 lbs	11 lbs	11 lbs
HEAD PROTECTOR	No	Yes (2)	Yes	Yes

**HAND
AUGERS**

	ESKIMO 6"	ESKIMO 7"	ESKIMO 8"	SILVERTIP 6"	SILVERTIP 8"
MODEL #	HD06	HD07	HD08	16000	16500
AUGER LENGTH	49" - 58"	49" - 58"	49" - 58"	49" - 58"	49" - 58"
AUGER DIAMETER	6 Inch	7 Inch	8 Inch	6 Inch	8 Inch
BLADE STYLE	Dual-Flat	Dual-Flat	Dual-Flat	Curved	Curved
HANDLE DESIGN	2-Piece Pommel	2-Piece Pommel	2-Piece Pommel	2-Piece Pommel	2-Piece Pommel
WEIGHT	6.5 lbs	7 lbs	7.5 lbs	7 lbs	8 lbs
WARRANTY	1-Year Limited	1-Year Limited	1-Year Limited	1-Year Limited	1-Year Limited

2017-2018 ESKIMO PRODUCT LINE SPEC CHARTS

All weights, specifications and features are approximate and are subject to change without notice. Due to continuous product improvements, product images may not be exact. Warning labels in some product images may have been removed for photography purposes only. Props shown in photos not included. Some assembly may be required.

POP-UP SHELTERS

	QUICKFISH 2	QUICKFISH 3	QUICKFISH 3I	QUICKFISH 5I	QUICKFISH 6	FATFISH 949	FATFISH 949I	FATFISH 9416	FATFISH 9416I	FATFISH 6120I
MODEL #	69151	69143	69445	24105	69149	FF949	FF949I	FF9416	FF9416I	FF6120I
CAPACITY	2 People	3 People	3 People	4 People	6 People	3-4 People	3-4 People	7-9 People	7-9 People	5-7 People
FISHABLE AREA	25 ft ²	34 ft ²	34 ft ²	64 ft ²	68 ft ²	61 ft ²	61 ft ²	109 ft ²	109 ft ²	80 ft ²
SET-UP SIZE	60" x 60"	70" x 70"	70" x 70"	108" x 108" x 108"	140" x 70"	94" x 94"	94" x 94"	167" x 94"	167" x 94"	115" x 115"
ELBOW ROOM	76" x 76"	90" x 90"	90" x 90"	115" x 115" x 115"	160" x 90"	99" x 99"	99" x 99"	172" x 99"	172" x 99"	122" x 122"
INSULATION	—	—	Full	Full	—	—	Full	—	Full	Full
FABRIC	IceTight™	IceTight™	Insulated IQ™	Insulated IQ™	IceTight™	IceTight™	Insulated IQ™	IceTight™	Insulated IQ™	Insulated IQ™
HEIGHT	67"	80"	80"	84"	80"	80"	80"	80"	80"	76"
WEIGHT	21.5 lbs	26 lbs	34 lbs	45 lbs	40 lbs	30 lbs	44 lbs	46 lbs	66 lbs	55 lbs
COLLAPSED SIZE	45" x 8.5" x 8.5"	52" x 8.5" x 8.5"	52" x 10.5" x 10.5"	63" x 11" x 11"	52" x 10.5" x 10.5"	65" x 7.5" x 7.5"	65" x 8.25" x 8.25"	61" x 9.8" x 9.8"	62" x 14" x 14"	67" x 13" x 13"
TRANSPORT	Cinch Backpack	Cinch Backpack	Oversized Duffel	Oversized Duffel	Cinch Backpack	Zipper Backpack	Oversized Duffel	Oversized Duffel	Oversized Duffel	Oversized Duffel
FRAMEWORK	Hub-Style	Hub-Style	Hub-Style	Hub-Style	Hub-Style	Hub-Style	Hub-Style	Hub-Style	Hub-Style	Hub-Style
ICE ANCHOR QTY	6	6	6	9	9	6	6	9	9	9
ANCHOR GROMMETS	Tab	In-Skirt	In-Skirt	Tab	In-Skirt	In-Skirt	In-Skirt	In-Skirt	In-Skirt	In-Skirt
TIE DOWNS	Standard	Standard	Standard	Standard	Standard	Deluxe	Deluxe	Deluxe	Standard	Deluxe
VENTILATION	2	2	2	2	2	2	2	2	2	2
WINDOWS	4	4	4	8	6	6 A-Frame	6 A-Frame	10 A-Frame	10 A-Frame	10 A-Frame
DOORS	1	2	2	2	2	2	2	2	2	2
GEAR NETS	—	—	—	2	—	2	2	4	4	4
MESH POCKETS	1	2	2	—	2	2	2	4	4	2
WARRANTY	1-Year Limited	1-Year Limited	1-Year Limited	1-Year Limited	1-Year Limited	1-Year Limited	1-Year Limited	1-Year Limited	1-Year Limited	1-Year Limited

POWER AUGERS

	STINGRAY 8"	F1 8"	F1 10"	MAKO 8"	MAKO 10"	SHARK 10"	HC40 8"	HC40 10"	P1 8"	P1 10"
MODEL #	S33Q8	F1R08	F1R10	M43Q8	M43Q10	Z71Q10	HC40Q8	HC40Q10	P1R08	P1R10
ENGINE	2-Cycle Viper®	2-Cycle Viper®	2-Cycle Viper®	2-Cycle Viper®	2-Cycle Viper®	2-Cycle Viper®	4-Cycle Viper®	4-Cycle Viper®	4-Cycle Viper®	4-Cycle Viper®
DISPLACEMENT	33 cc	33 cc	33 cc	43 cc	43 cc	71 cc	40 cc	40 cc	40 cc	40 cc
TRANSMISSION	Ball Bearing	Ball Bearing	Ball Bearing	Ball Bearing	Ball Bearing	Ball Bearing	Ball Bearing	Ball Bearing	Ball Bearing	Ball Bearing
AUGER LENGTH	42 Inch	42 Inch	42 Inch	42 Inch	42 Inch	42 Inch	42 Inch	42 Inch	42 Inch	42 Inch
AUGER DIAMETER	8 Inch	8 Inch	10 Inch	8 Inch	10 Inch	10 Inch	8 Inch	10 Inch	8 Inch	10 Inch
AUGER STYLE	Quantum™	Rocket™	Rocket™	Quantum™	Quantum™	Quantum™	Quantum™	Quantum™	Rocket™	Rocket™
BLADE STYLE	Quantum™	Quantum™	Quantum™	Quantum™	Quantum™	Quantum™	Quantum™	Quantum™	Quantum™	Quantum™
HANDLEBARS	Steel	Aluminum	Aluminum	Steel	Steel	Aluminum	Steel	Steel	Aluminum	Aluminum
HYPERCOIL	Sold Separately	Sold Separately	Sold Separately	Sold Separately	Sold Separately	Included	—	—	—	—
WEIGHT	28 lbs	22 lbs	24 lbs	32 lbs	34 lbs	34 lbs	32 lbs	34 lbs	26 lbs	28 lbs
WARRANTY	5-Year Limited	5-Year Limited	5-Year Limited	5-Year Limited	5-Year Limited	5-Year Limited	5-Year Limited	5-Year Limited	5-Year Limited	5-Year Limited



GetEskimo.com

28618] ©2017 Ardisam, Inc. All Rights Reserved.

SHARE THE CATCH



A DOWN-TO-EARTH ICE FISHING PODCAST
WITH KYLE AGRE, SCOTTY BREWER & GUESTS



1160 8TH AVENUE, PO BOX 666 • CUMBERLAND, WI 54829 • 800.345.6007 • INFO@GETESKIMO.COM